

TALAS

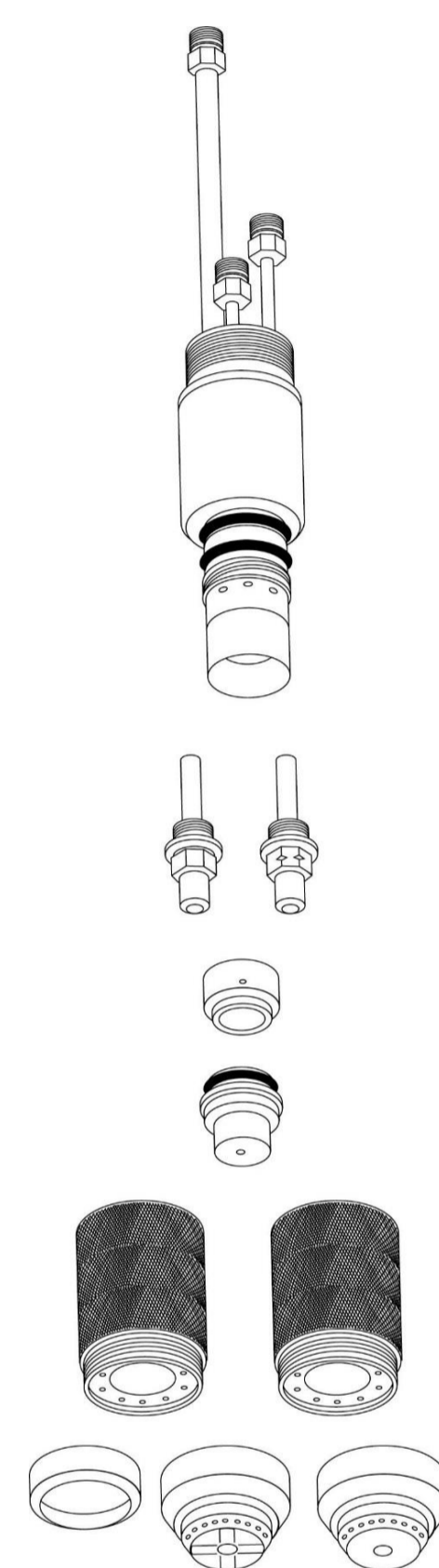
Paardenkerkhofstraat 56 B-2800 Mechelen
 Tel. +32(0)15.61.60.07 Fax. +32(0)15.61.75.27
 Email. info@talas.be www.talas.be



MAX100D® (PAC 160™)



Item No.	Pkg Qty	Centricut Part #	Ref Number	Description		
1	1	H03-333	020333	Deflector	9,30 €	10pcs
2	1	H03-334	020334	Shield, Machine, 100 Amp		
	1	H03-492	020492	Shield, Machine, 40 Amp		
3	1	H03-335	020335	Shield, Hand, 100 Amp		
4	1	H03-846	020846	Retaining Cap, 100 Amp		
	1	H03-699	020699	Retaining Cap, Gouging, 100 Amp		
5	1	H03-756	020756	Retaining Cap, 60 Amp		
	1	H03-712	020712	Shield, Gouging		
6	5	C03-705	020705	Nozzle, 100 Amp		
	5	C03-036	120336	Nozzle, Shielded, 60 Amp	3,35 €	13pcs
	5	H03-922	020922	Nozzle, Nonshielded, 60 Amp		
	5	H03-921	020921	Nozzle, Air, Nonshielded, 30-40 Amp		
	5	H03-754	020754	Nozzle, Extended, 100 Amp		
	5	C03-018	026018	O-Ring, Torch Body	0,41 €	5pcs
7	1	C03-706	020706	Swirl Ring, Air, N2, 60-100 Amp		
	1	H03-950	020950	Swirl Ring, 30-40 Amp		
	5	C03-891	120433	Electrode, Long Life	5,88 €	47pcs
8	5	C03-191	020191	Electrode, Air		
9	5	H03-193	020193	Electrode, N2		
	5	C03-193	020193	Electrode, N2		
	5	C03-444	120444	Electrode, Air, Extended	6,54 €	25pcs
	5	H03-887	020887	Electrode, N2, Extended		
	5	H03-744	020744	Electrode, Gouging		
	5	H03-951	020951	Electrode, Air, 30-40 Amp		
	1	H03-243	020243	Torch Positioning Sleeve Ass'y, 10 3/4 in		
	1	H03-244	020244	Torch Mounting Sleeve, Black Delrin		
	1	H03-461	020461	PAC160 Torch Body, Hand 70°		
10	1	H03-713	020713	MAX100D®/PAC160 Torch Body, Machine		
	1	H03-761	020761	PAC160 Torch Body, Hand 90°		



Reference to the above-named machines, torches, and reference numbers are for convenience only. All products with a "C" in the part number are manufactured by or for Centricut, LLC. The use of other prefixes indicate parts manufactured by the above-named OEM, which are simply being resold by Centricut, LLC., and will be supplied in OEM packaging.